

CLDS #	NAME	REFERENCE FOR MAINT. NOTES
30.00	SPECIAL EROSION CONTROL REQUIRMENTS & NOTES	N/A
30.01	TEMPORARY SEDIMENT TRAP	6.60.5
30.02A	SKIMMER SEDIMENT BASIN	6.64.9
30.02B	SKIMMER	6.64.9
30.03A	SEDIMENT BASIN	6.61.8
30.03B	GENERAL NOTES—SEDIMENT BASINS	N/A
30.04	FLEXIBLE PIPE SLOPE DRAIN	6.32.3
30.05	TEMPORARY SILT DITCH	6.20.3 / 6.30.4
30.06A	TEMPORAY SILT FENCE	6.62.7
30.06B	HIGH HAZARD TEMPORARY SILT FENCE	SEE CLDS 30.06B DETAIL
30.06C	SILT FENCE OUTLET	SEE CLDS 30.06C DETAIL
30.06D	SUPER SILT FENCE	SEE CLDS 30.06D DETAIL
30.07	BLOCK AND GRAVEL STONE INLET PROTECTION	6.52.2
30.08	STONE INLET PROTECTION	6.55.3
30.09	HARDWARE CLOTH AND GRAVEL INLET PROTECTION	6.51.2
30.10A	TEMPORARY ROCK CHECK DAM	6.83.3
30.10B	TEMPORARY ROCK CHECK DAM W MATTING & PAM	6.83.3 / 6.86.5
30.10C	TEMPORARY WATTLE CHECK DAM W MATTING	N/A
30.10D	TEMPORARY WATTLE CHECK DAM W MATTING & PAM	N/A
30.11A	STABILIZED CONSTRUCTION ENTRANCE	6.06.2
30.11B	CONSTRUCTION ENTRANCE TIRE WASH	6.06.2
30.11C	SINGLE FAMILY LOT CONTROLS	6.06.2/CLDS 30.11C DETAIL
30.11D	URBAN BLOCK/LOT CONTROLS	SEE CLDS 30.11D DETAIL
30.12	GRAVEL AND RIP RAP FILTER BERM BASIN	6.63.5
30.13	EROSION CONTROL DEWATERING	N/A
30.14	TEMPORARY STREAM CROSSING	6.70.6
30.15	CATCH BASIN INLET PROTECTION	SEE CLDS 30.15 DETAIL
30.16	SLOPE STABILITY	6.02.3
30.17	TEMPORARY SEEDING SCHEDULE	6.10.3
30.18	TEMPORARY ASPHALT DIVERSION BERM	SEE CLDS 30.18 DETAIL
30.19	BAFFLE INSTALLATION	6.65.6
30.20	EMBANKMENT MATTING DETAIL	6.17.12
30.21	BRICK STORM STRUCTURE W TEMPORARY PIPE	N/A
30.22A	BYPASS PUMPING	N/A
30.22B	SUSPENDED BYPASS PIPE	N/A
30.22C	PIPED DIVERSION	N/A
30.23	TURBIDITY CURTAIN	SEE CLDS 30.23 DETAIL

THE NCDEQ MAINTENANCE REFERENCES INDICATED ARE FROM THE NORTH CAROLINA EROSION AND SEDIMENT CONTROL PLANNING AND DESIGN MANUAL (NCESCPDM, LATEST EDITION) PREPARED BY NC DEPT. OF ENVIRONMENTAL QUALITY (NCDEQ); ALSO REFERENCE NCDOT ROADWAY STANDARD DRAWINGS, LATEST EDITION.



CITY OF CHARLOTTE
LAND DEVELOPMENT STANDARDS
 INCLUDES CHARLOTTE ETJ

EROSION CONTROL STANDARDS LIST & MAINTENANCE REFERENCES

STD. NO.	REV.
30.00	25

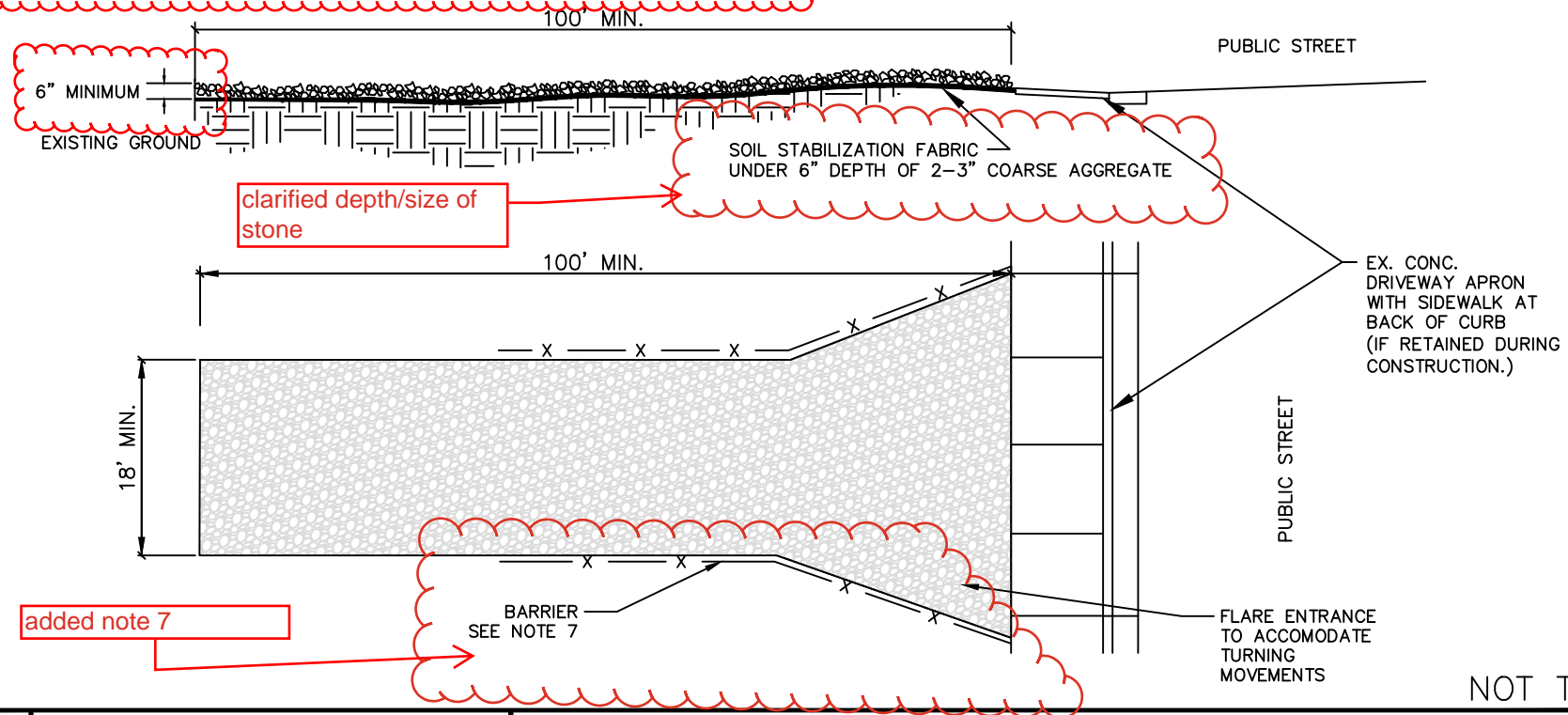
added

NOTES:

1. A STABILIZED ENTRANCE PAD SHALL BE LOCATED WHERE TRAFFIC WILL ENTER OR LEAVE THE CONSTRUCTION SITE ONTO A PUBLIC STREET.
2. FILTER FABRIC OR COMPACTED CRUSHER RUN STONE SHALL BE USED AS A BASE FOR THE CONSTRUCTION ENTRANCE.
3. THICKNESS OF GRAVEL PAD WILL BE A MINIMUM OF 6", COMPRISED OF 2-3" COARSE AGGREGATE.
4. DIMENSION OF GRAVEL PAD WILL BE A MINIMUM OF 100' IN LENGTH AND 18' IN WIDTH.
5. CDOT MAY REQUIRE A STANDARD COMMERCIAL DRIVEWAY (STD. 10.24 & 10.25) TO ACCESS THE CONSTRUCTION SITE IF THE DRIVEWAY IS ON A THOROUGHFARE, OR ON ANY STREET WITH AN EXISTING SIDEWALK TO REMAIN OPEN DURING CONSTRUCTION.
6. FOLLOW WORK AREA TRAFFIC CONTROL HANDBOOK (WATCH) FOR SIDEWALK CLOSURE OR DETOUR/DIVERSION.
7. INSTALL SILT FENCE OR OTHER BARRIER TO CONFINE TRAFFIC TO CONSTRUCTION ENTRANCE.

MAINTENANCE NOTES:

1. THE ENTRANCE SHALL BE MAINTAINED IN A CONDITION WHICH WILL PREVENT TRACKING OR FLOWING OF SEDIMENT ONTO PUBLIC STREETS OR EXISTING PAVEMENT. THIS MAY REQUIRE PERIODIC TOP DRESSING WITH ADDITIONAL STONE AS CONDITIONS WARRANT AND REPAIR OR CLEANOUT OF ANY MEASURES USED TO TRAP SEDIMENT.
2. ANY SEDIMENT SPILLED, DROPPED, WASHED, OR TRACKED ONTO PUBLIC STREETS MUST BE REMOVED IMMEDIATELY. ANY AGGREGATE TRACKED INTO THE ROADWAY MUST BE SWEEPED BACK ONSITE ON A NIGHTLY BASIS.
3. WHEN APPROPRIATE, WHEELS MUST BE CLEANED TO REMOVE SEDIMENT PRIOR TO ENTERING A PUBLIC STREET. WHEN WASHING IS REQUIRED, IT SHALL BE DONE IN AN AREA STABILIZED WITH CRUSHED STONE WHICH DRAINS INTO AN APPROVED SEDIMENT BASIN SEE STD. NO. 30.11B.



NOT TO SCALE



CITY OF CHARLOTTE
LAND DEVELOPMENT STANDARDS
INCLUDES CHARLOTTE ETJ

STABILIZED CONSTRUCTION ENTRANCE

STD. NO.	REV.
30.11A	25

Notes copied from 30.11A

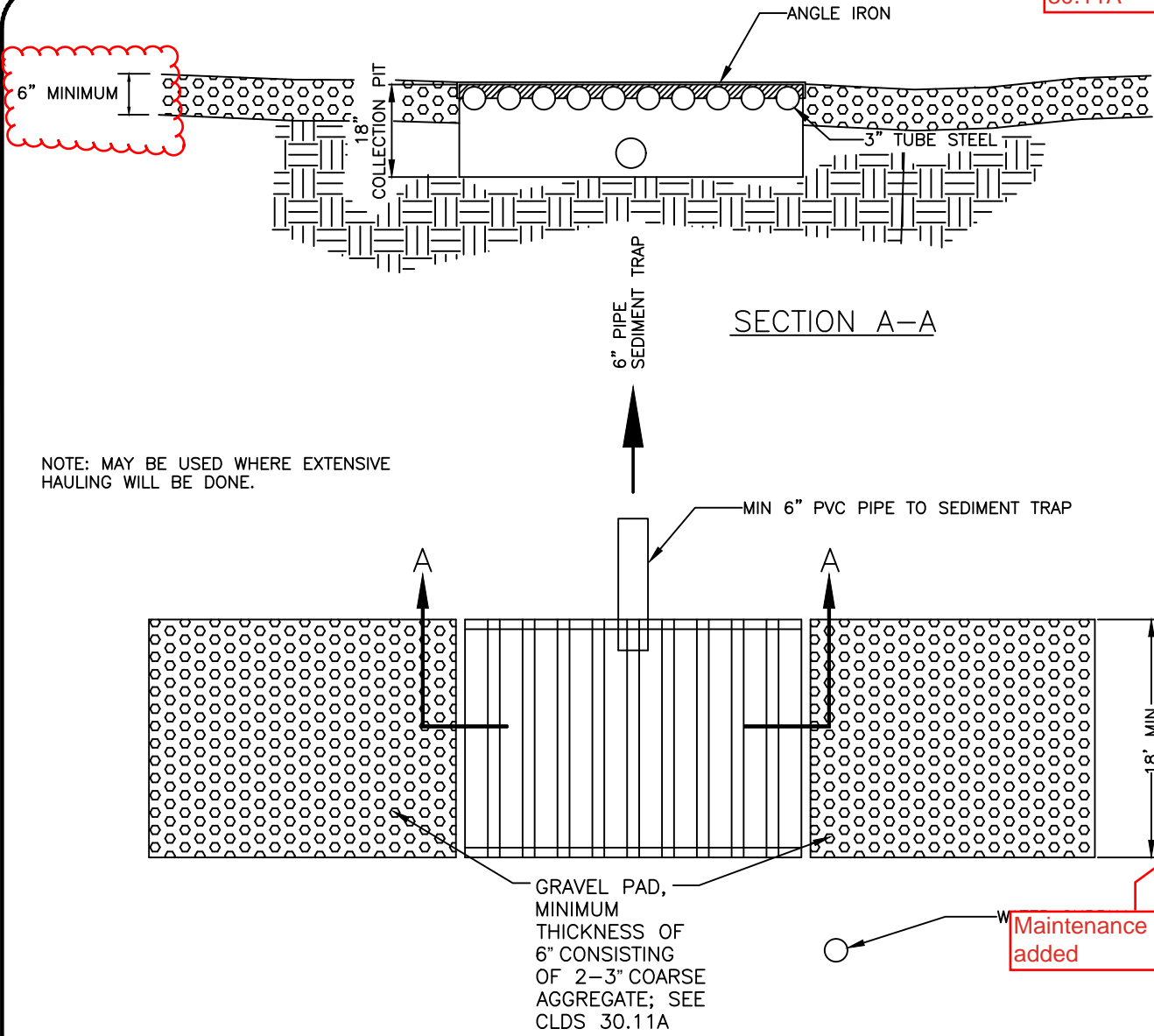
NOTES:

1. A STABILIZED ENTRANCE PAD SHALL BE LOCATED WHERE TRAFFIC WILL ENTER OR LEAVE THE CONSTRUCTION SITE ONTO A PUBLIC STREET.
2. FILTER FABRIC OR COMPACTED CRUSHER RUN STONE SHALL BE USED AS A BASE FOR THE CONSTRUCTION ENTRANCE.
3. THICKNESS OF GRAVEL PAD WILL BE A MINIMUM OF 6", COMPRISED OF 2-3" COARSE AGGREGATE.
4. DIMENSION OF GRAVEL PAD WILL BE A MINIMUM OF 100' IN LENGTH AND 18' IN WIDTH.
5. CDOT MAY REQUIRE A STANDARD COMMERCIAL DRIVEWAY (STD. 10.24 & 10.25) TO ACCESS THE CONSTRUCTION SITE IF THE DRIVEWAY IS ON A THOROUGHFARE, OR ON ANY STREET WITH AN EXISTING SIDEWALK TO REMAIN OPEN DURING CONSTRUCTION.
6. FOLLOW WORK AREA TRAFFIC CONTROL HANDBOOK (WATCH) FOR SIDEWALK CLOSURE OR DETOUR/DIVERSION.
7. INSTALL SILT FENCE OR OTHER BARRIER TO CONFINe TRAFFIC TO CONSTRUCTION ENTRANCE.

MAINTENANCE NOTES:

1. THE ENTRANCE SHALL BE MAINTAINED IN A CONDITION WHICH WILL PREVENT TRACKING OR FLOWING OF SEDIMENT ONTO PUBLIC STREETS OR EXISTING PAVEMENT. THIS MAY REQUIRE PERIODIC TOP DRESSING WITH ADDITIONAL STONE AS CONDITIONS WARRANT AND REPAIR OR CLEANOUT OF ANY MEASURES USED TO TRAP SEDIMENT.
2. ANY SEDIMENT SPILLED, DROPPED, WASHED, OR TRACKED ONTO PUBLIC STREETS MUST BE REMOVED IMMEDIATELY. ANY AGGREGATE TRACKED INTO THE ROADWAY MUST BE SWEEPED BACK ONSITE ON A NIGHTLY BASIS.
3. WHEN APPROPRIATE, WHEELS MUST BE CLEANED TO REMOVE SEDIMENT PRIOR TO ENTERING A PUBLIC STREET. WHEN WASHING IS REQUIRED, IT SHALL BE DONE IN AN AREA STABILIZED WITH CRUSHED STONE WHICH DRAINS INTO AN APPROVED SEDIMENT BASIN.

Maintenance notes added



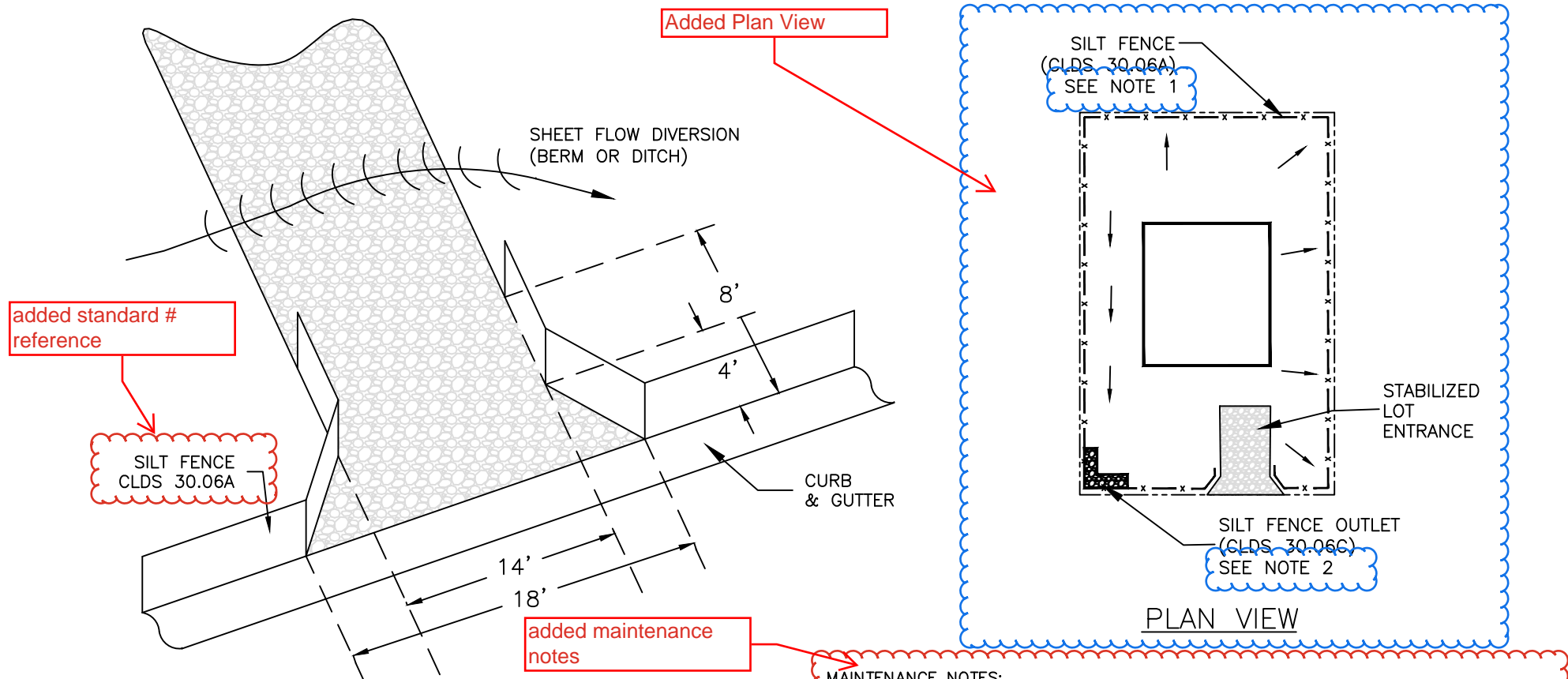
NOT TO SCALE



CITY OF CHARLOTTE
LAND DEVELOPMENT STANDARDS
INCLUDES CHARLOTTE ETJ

CONSTRUCTION ENTRANCE
TIRE WASH

STD. NO.	REV.
30.11B	25



NOTES:

1. SILT FENCE REQUIRED ON PERIMETER WHERE NECESSARY TO CONTAIN SEDIMENT TO THE LOT UNDER ACTIVE CONSTRUCTION.
2. SILT FENCE OUTLET SHALL BE INSTALLED WITH CONSIDERATION OF EXISTING OR PROPOSED LOT DRAINAGE SWALES.
3. PROVIDE 6" MINIMUM STONE DEPTH
4. USE 2-3" COARSE AGGREGATE
5. INSTALL SOIL STABILIZATION FABRIC OR 4" COMPACTED ABC STONE UNDER ENTRANCE
6. TYPICAL LENGTH OF ENTRANCE = 25' (UNLESS LIMITED BY LOT CONFIGURATION).
7. REFERENCE CLDS 30.06A FOR SILT FENCE INSTALLATION AND MAINTENANCE.
8. REFERENCE CLDS 30.06C FOR SILT FENCE OUTLET INSTALLATION AND MAINTENANCE.

clarified

MAINTENANCE NOTES:

1. THE ENTRANCE SHALL BE MAINTAINED IN A CONDITION WHICH WILL PREVENT TRACKING OR FLOWING OF SEDIMENT ONTO PUBLIC STREETS OR EXISTING PAVEMENT. THIS MAY REQUIRE PERIODIC TOP DRESSING WITH ADDITIONAL STONE AS CONDITIONS WARRANT AND REPAIR OR CLEANOUT OF ANY MEASURES USED TO TRAP SEDIMENT.
2. ANY SEDIMENT SPILLED, DROPPED, WASHED, OR TRACKED ONTO PUBLIC STREETS MUST BE REMOVED IMMEDIATELY. ANY AGGREGATE TRACKED INTO THE ROADWAY MUST BE SWEEPED BACK ONSITE ON A NIGHTLY BASIS.
3. WHEN APPROPRIATE, WHEELS MUST BE CLEANED TO REMOVE SEDIMENT PRIOR TO ENTERING A PUBLIC STREET. WHEN WASHING IS REQUIRED, IT SHALL BE DONE IN AN AREA STABILIZED WITH CRUSHED STONE WHICH DRAINS INTO AN APPROVED SEDIMENT BASIN SEE STD. NO. 30.11B.

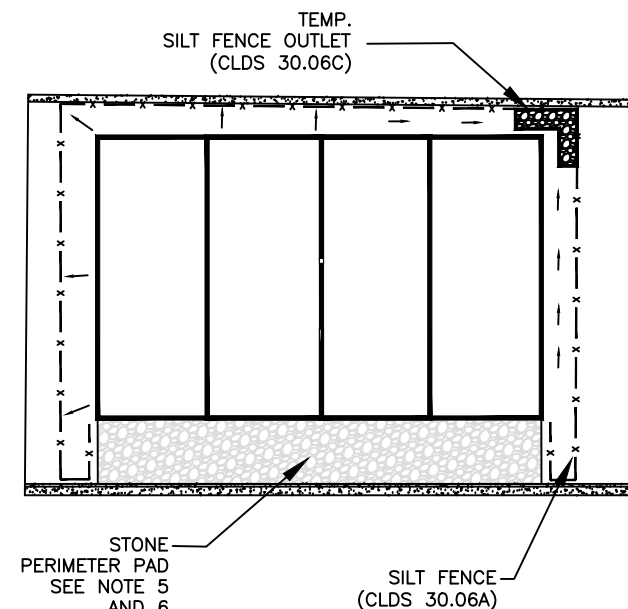
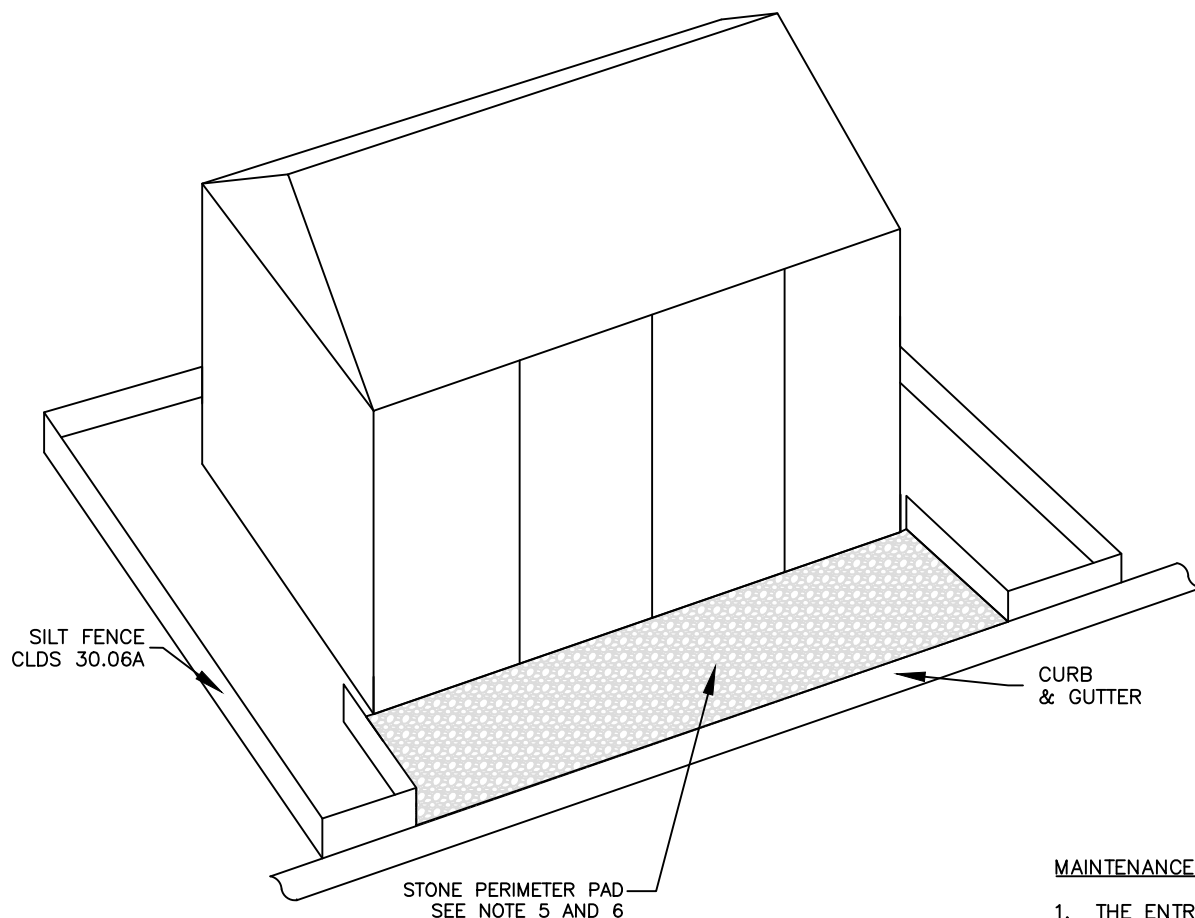


CITY OF CHARLOTTE
LAND DEVELOPMENT STANDARDS
INCLUDES CHARLOTTE ETJ

SINGLE FAMILY LOT CONTROLS

NOT TO SCALE

STD. NO.	REV.
30.11C	25



PLAN VIEW

NOTES:

1. SILT FENCE REQUIRED ON PERIMETER WHERE NECESSARY TO CONTAIN SEDIMENT TO THE LOT OR BLOCK UNDER ACTIVE CONSTRUCTION.
2. SILT FENCE OUTLET SHALL BE INSTALLED WITH CONSIDERATION OF EXISTING OR PROPOSED LOT DRAINAGE SWALES.
3. REFERENCE CLDS 30.06A FOR SILT FENCE INSTALLATION AND MAINTENANCE.
4. REFERENCE CLDS 30.06C FOR SILT FENCE OUTLET INSTALLATION AND MAINTENANCE.
5. STONE PERIMETER PAD MUST BE PLACED FROM BACK OF CURB TO BUILDING.
6. INSTALL 6" OF 2-3" COARSE AGGREGATE PER CONSTRUCTION ENTRANCE DETAIL 30.11A AS NECESSARY TO PROTECT SITE FROM SEDIMENT TRACK-OUT.

MAINTENANCE NOTES:

1. THE ENTRANCE SHALL BE MAINTAINED IN A CONDITION WHICH WILL PREVENT TRACKING OR FLOWING OF SEDIMENT ONTO PUBLIC STREETS OR EXISTING PAVEMENT. THIS MAY REQUIRE PERIODIC TOP DRESSING WITH ADDITIONAL STONE AS CONDITIONS WARRANT AND REPAIR OR CLEANOUT OF ANY MEASURES USED TO TRAP SEDIMENT.
2. ANY SEDIMENT SPILLED, DROPPED, WASHED, OR TRACKED ONTO PUBLIC STREETS MUST BE REMOVED IMMEDIATELY. ANY AGGREGATE TRACKED INTO THE ROADWAY MUST BE SWEEPED BACK ONSITE ON A NIGHTLY BASIS.
3. WHEN APPROPRIATE, WHEELS MUST BE CLEANED TO REMOVE SEDIMENT PRIOR TO ENTERING A PUBLIC STREET. WHEN WASHING IS REQUIRED, IT SHALL BE DONE IN AN AREA STABILIZED WITH CRUSHED STONE WHICH DRAINS INTO AN APPROVED SEDIMENT BASIN SEE STD. NO. 30.11B.



CITY OF CHARLOTTE
LAND DEVELOPMENT STANDARDS
INCLUDES CHARLOTTE ETJ

URBAN BLOCK/LOT CONTROLS

NOT TO SCALE

STD. NO.	REV.
30.11D	25