



---

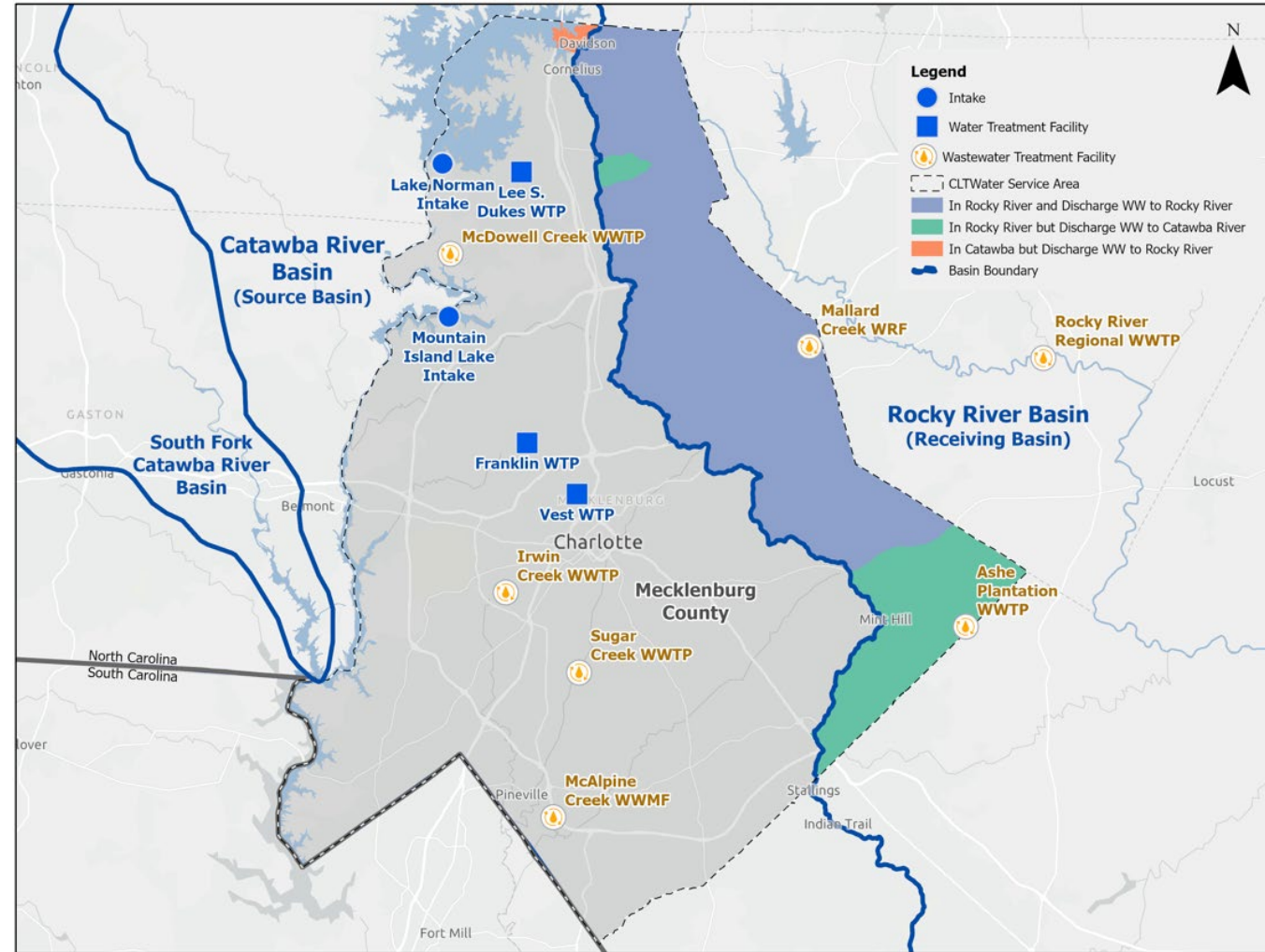
# **Charlotte Water Interbasin Transfer (IBT) Modification Request**

**REBIC NOVEMBER 12, 2024**

SUBMIT QUESTIONS & COMMENTS TO: [IBTProject@charlottenc.gov](mailto:IBTProject@charlottenc.gov)

# About Charlotte Water

- ▶ Service Area includes Mecklenburg County and surrounding counties with customers in both Catawba & Rocky River Basins
- ▶ Largest public water and wastewater utility in NC
- ▶ Population Served – 1,145,392



# What is this IBT modification about?

- ◁ Charlotte Water is **not** asking for permission to *withdraw* more water from the Catawba River
- ◁ We **are** exploring the need to increase the amount of water we are allowed to *transfer* to the Rocky River Basin



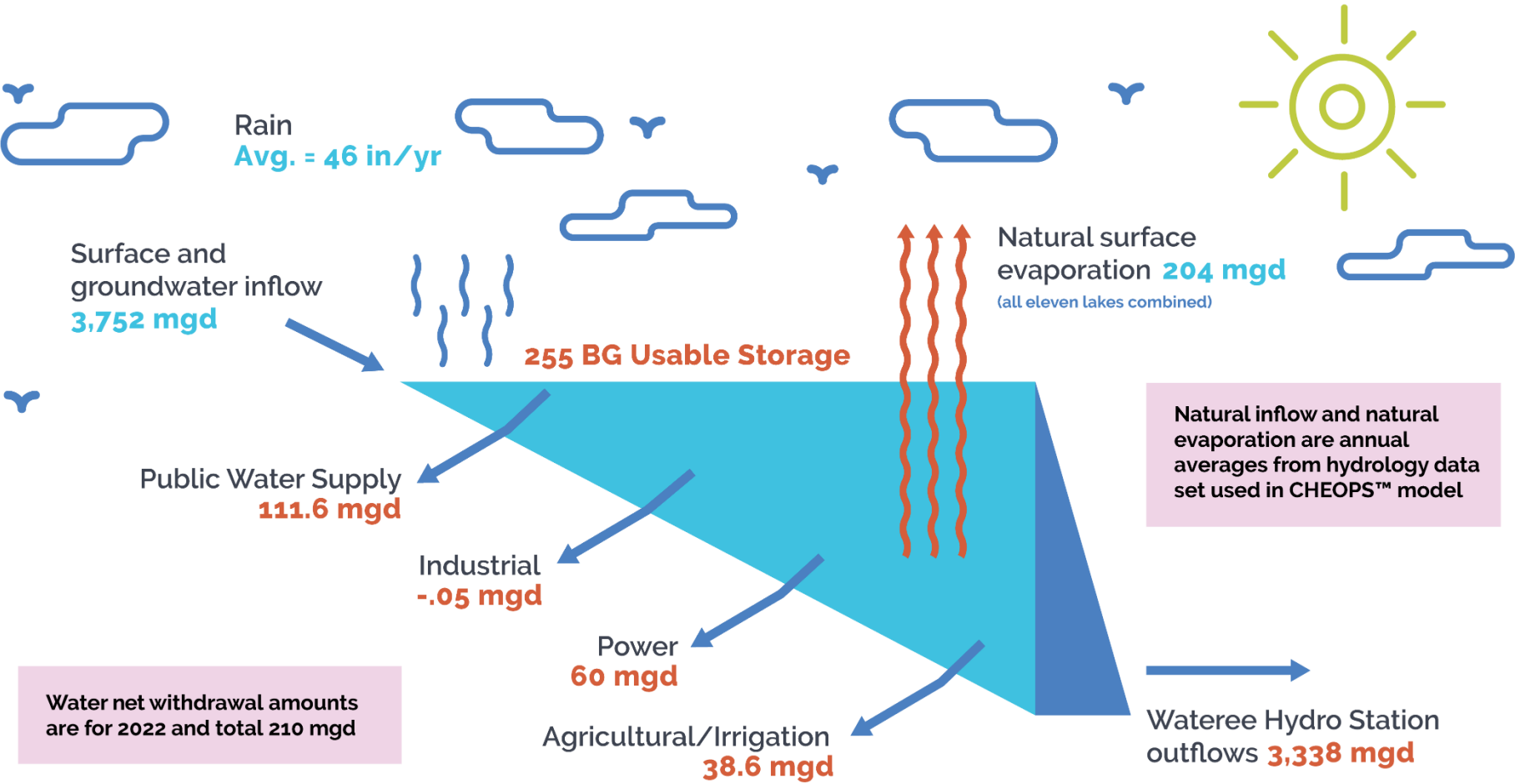
# Impacts of this request?

- ◁ The potential request to transfer an additional 30 million-gallons-per-day (MGD) would be less than a 1% of the flow through the Catawba-Wateree system on a daily basis
- ◁ The modeling of the Catawba-Wateree system was developed by Duke Energy in 2006 for the FERC relicensing process
  - Demand projections through 2058 were included in that model for water withdrawals
  - Local water supply plans for NC and SC communities were included in projections
  - Future growth and potential for IBT increases in several reservoirs were forecasted, including Charlotte Water's
- ◁ Charlotte's potential request is within modeled projections
- ◁ CWWMG is currently updating the model through 2075

# IBT Modification Request Details

- ◁Catawba-Wateree Lake System
- ◁What is an IBT?
- ◁Proactive Planning
- ◁Why is an IBT modification needed now?
- ◁What is the IBT modification process and schedule?
- ◁What alternatives are being considered?
- ◁Questions

# The Lakes and Partnerships Help Rainfall Drive the System



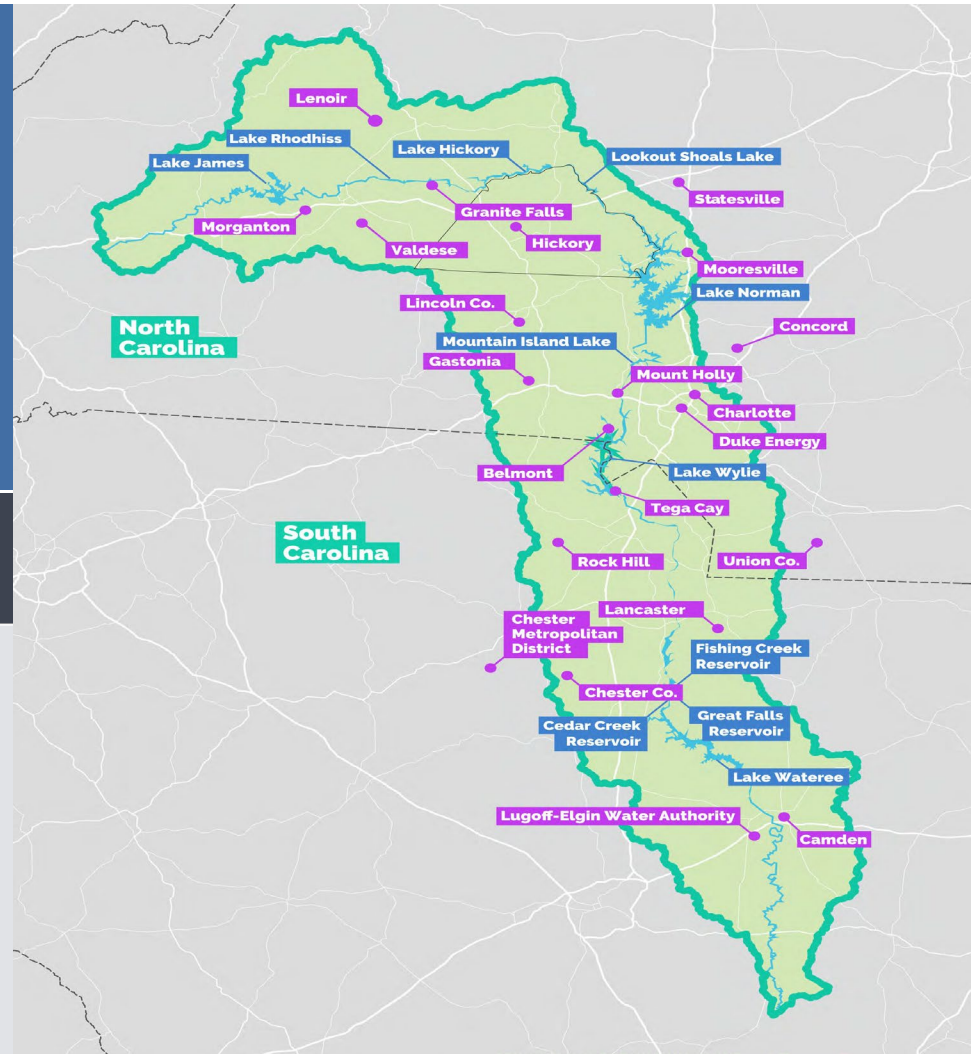
\* mgd = million gallons per day; BG = Billion Gallons.



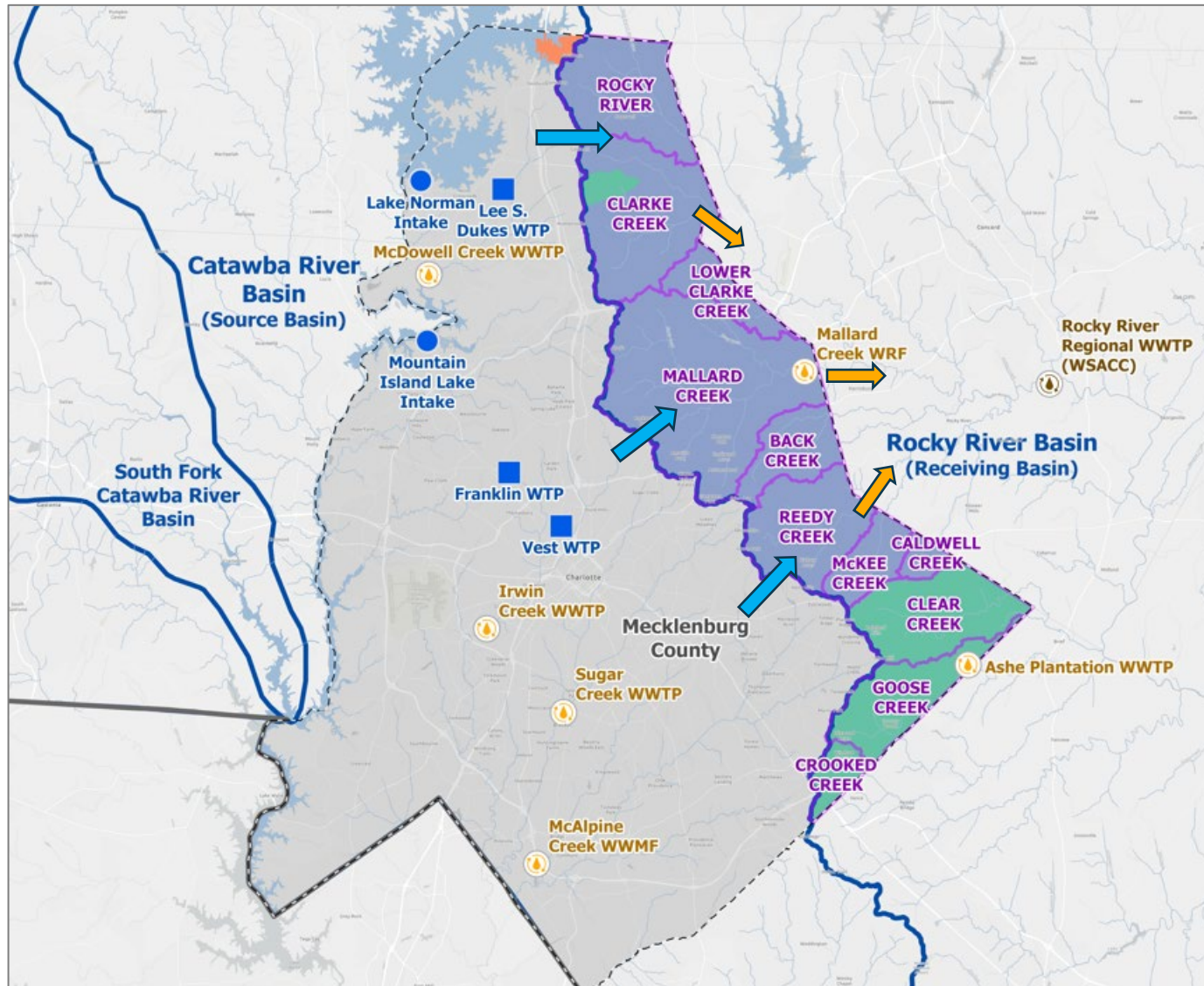
**Area of Detail** ● **Map Legend**



- Catawba-Wateree River Basin
- Main Riverine System
- State Border



# What is an IBT?



An IBT is a withdrawal, diversion or pumping of water from one source river basin to another river basin. The water from the source basin is treated and distributed to customers for everyday water usage, then collected and treated at wastewater treatment plants before portions are discharged to the receiving

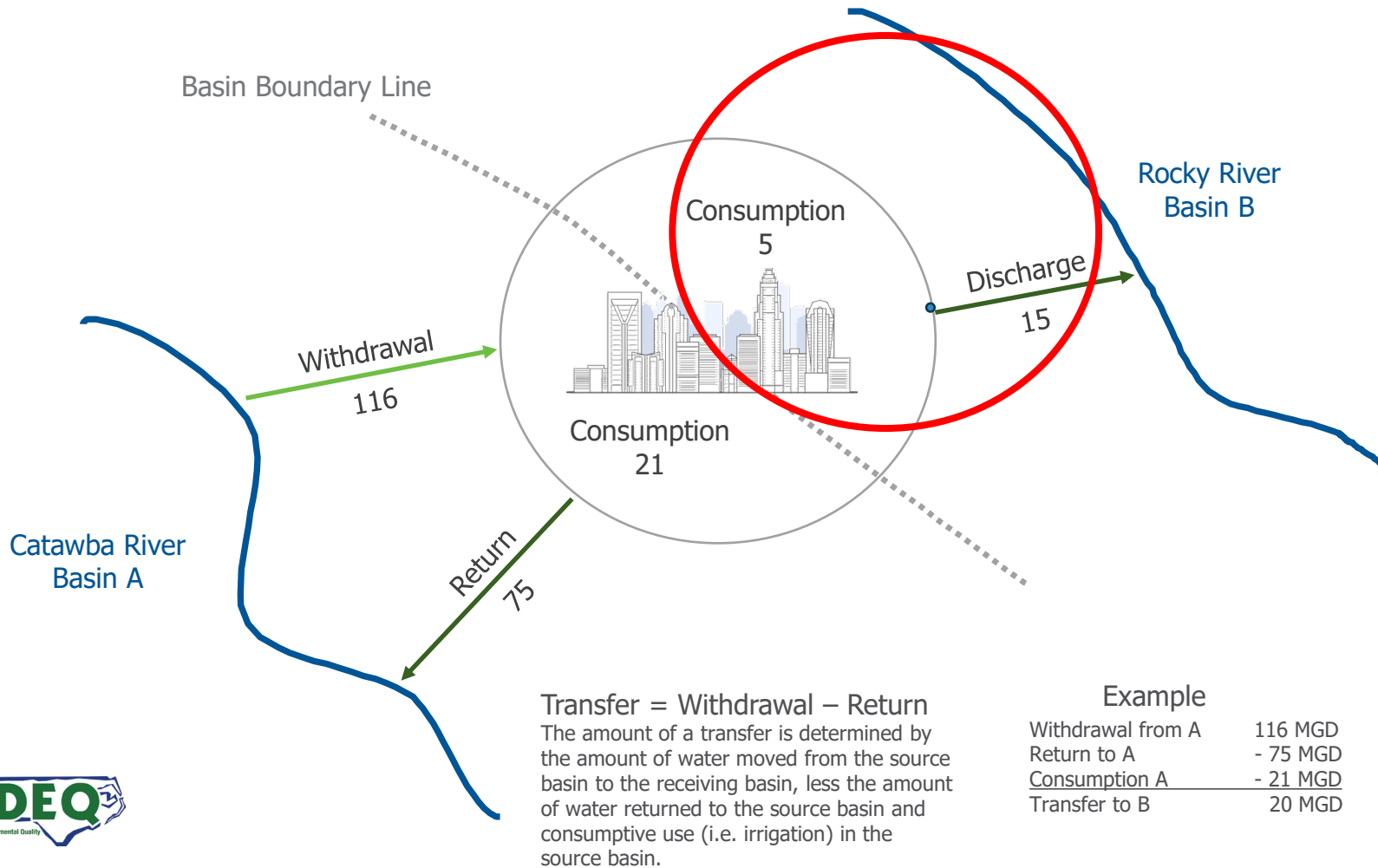


# Proactive Planning

- ◀ 2002 – Initial IBT of 33 MGD Peak Day
- ◀ Now planning for next 30 years before the limit is exceeded
- ◀ Long-term Partner with Catawba Wateree Water Management Group and Other Stakeholders
- ◀ Local and Regional Conservation and Drought Planning

**As projected, the original IBT supports Charlotte Water's system through approximately 2028. Additional water through the modification process is timely.**

# What is an Interbasin Transfer (IBT)?



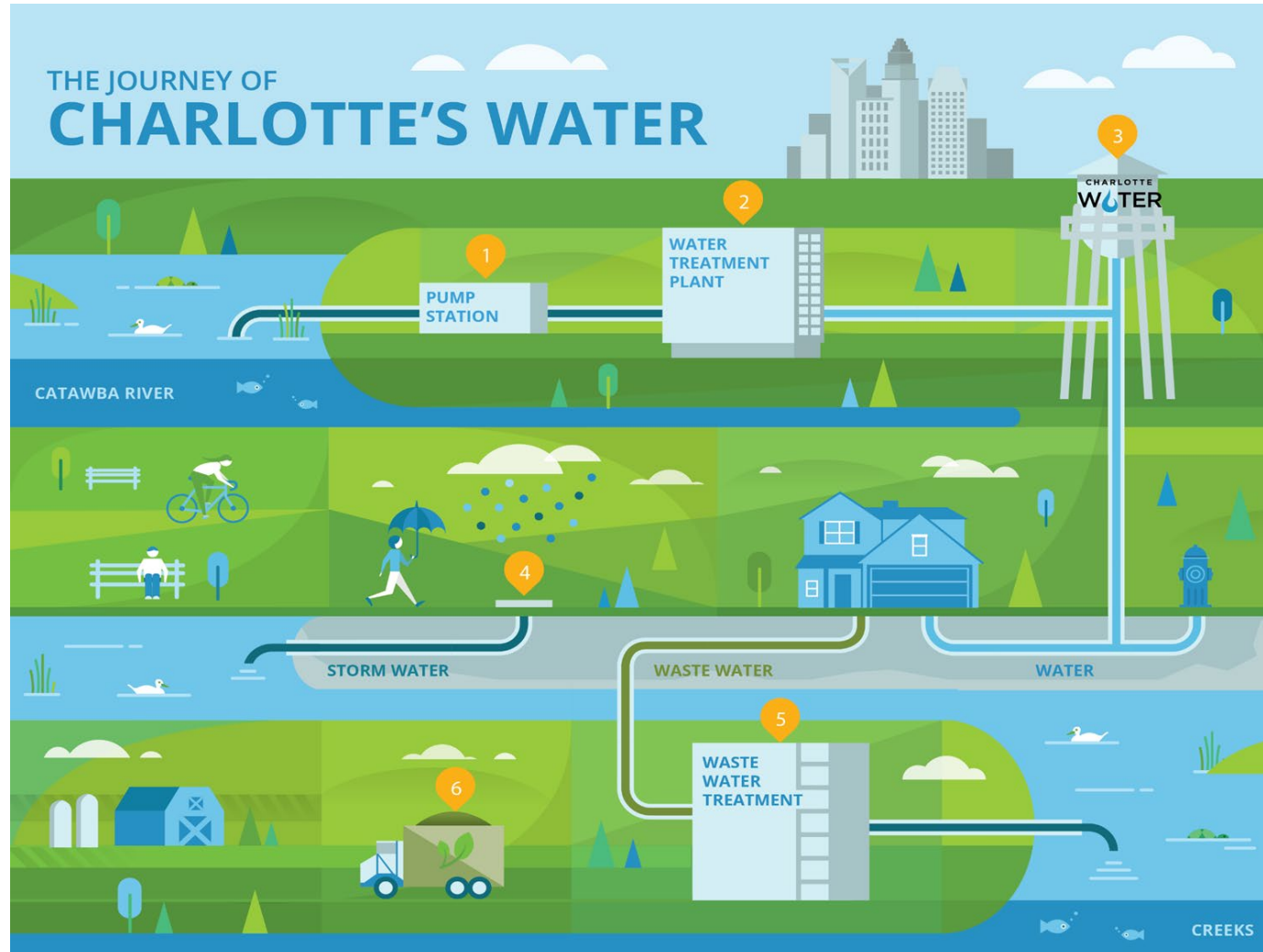
Example

Withdrawal from A	116 MGD
Return to A	- 75 MGD
<u>Consumption A</u>	<u>- 21 MGD</u>
Transfer to B	20 MGD

An IBT is a withdrawal, diversion or pumping of water from one source river basin to another river basin. The water from the source basin is treated and distributed to customers for everyday water usage, then collected and treated at wastewater treatment plants before

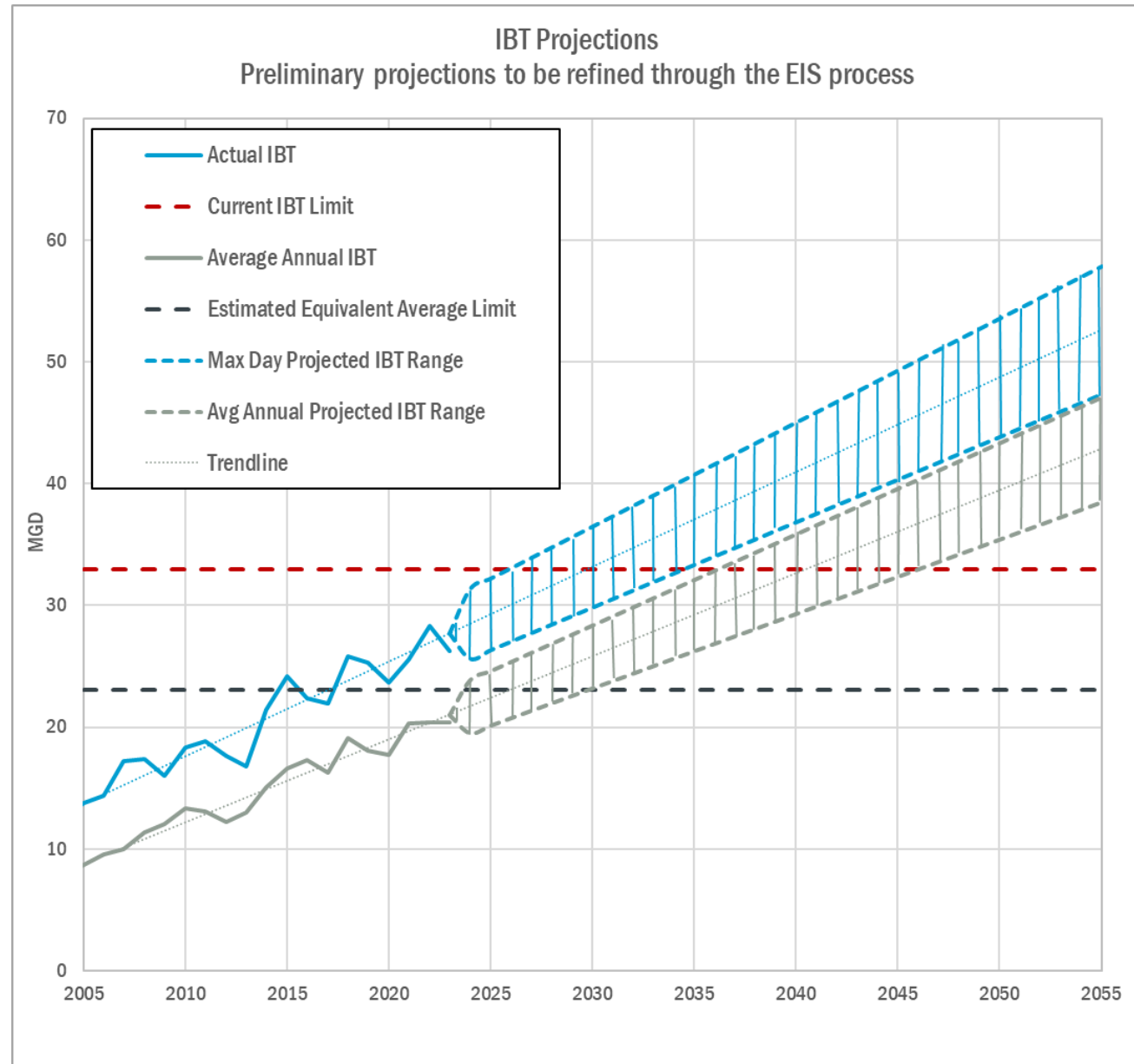


# Charlotte's Water Cycle

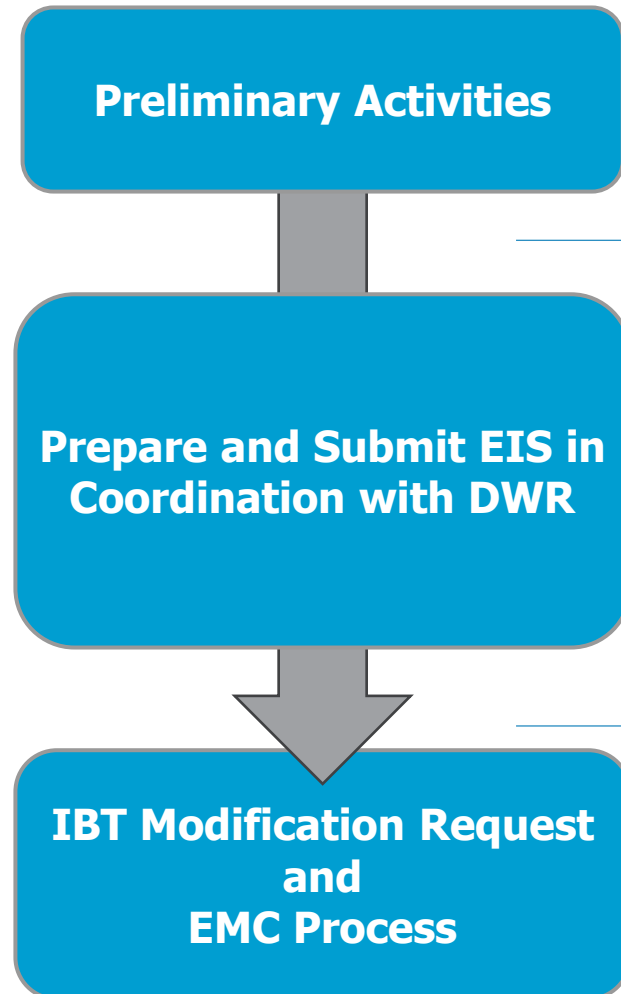


# Why is an IBT Needed?

- ◁ 2002 IBT Certification limit is 33 MGD Peak Day
- ◁ Currently at 79% of limit
- ◁ Based on population projections, current IBT will be exceeded between 2028-2030 as previously planned



# IBT Modification and EIS Development Process

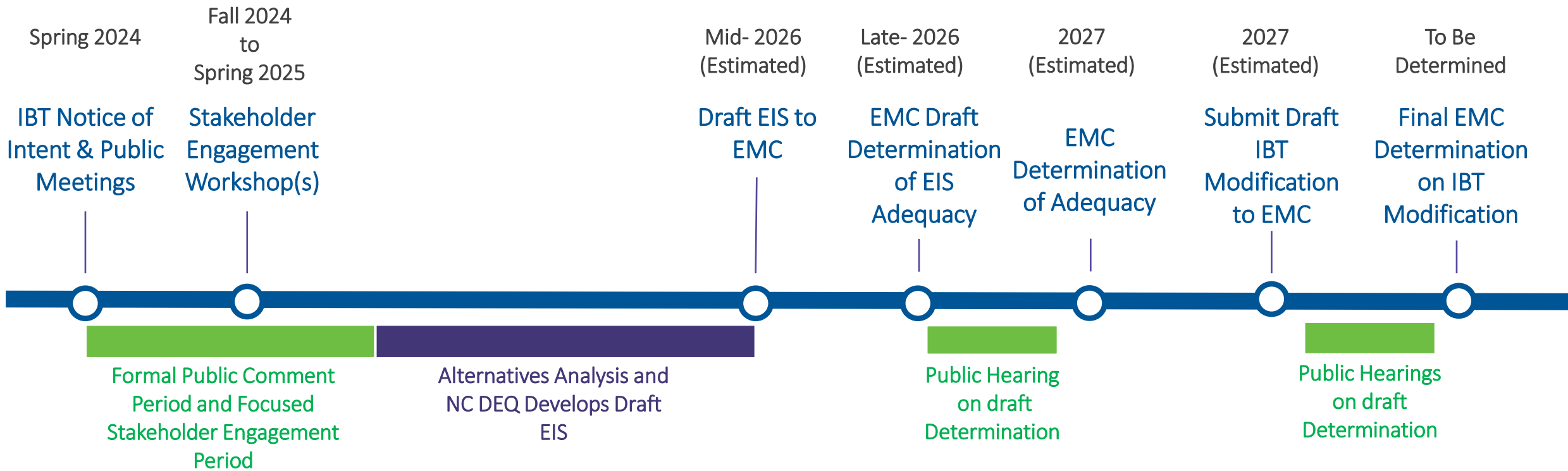


- Notice of Intent and Notification of Public Meetings
- Public Meetings & Comment Period (ends 8/30/24)

- 
- Extended Stakeholder Engagement and Input ← **Today**
    - Including SC Agencies & Stakeholders throughout the process
  - Incorporate and address public meetings comments
  - Alternatives Analysis
  - IBT studies – demand, conservation, drought, monitoring
  - NC DEQ Develops Draft Environmental Impact Statement (EIS)
  - EMC Public Hearing and determination of Adequacy of EIS
  - CLT Water Submits IBT Modification Request to NC DEQ

- 
- EMC issues draft determination
  - EMC Public Hearing on draft determination
  - EMC Issues Final Determination on IBT

# IBT Modification Preliminary Schedule\*



**\*Coordination with SC DES Throughout**

**Acronyms:**

EIS – Environmental Impact Statement

IBT – Interbasin Transfer

NC EMC – NC Environmental Management Commission

NC DEQ – NC Department of Environmental Quality

# Preliminary Alternatives

## ◀ Preliminary Alternative Categories Considered

- Pump wastewater back to the Catawba Basin
- Blending effluent with raw water at WTP (limited to 20%)
- Potable reuse from effluent (not currently allowed)
- New water sources in the Yadkin Basin
- Increase existing IBT through modification

## ◀ Alternatives Evaluation Criteria

- Capital costs
- Schedule
- O&M costs
- Benefits/risks
- Environmental factors
- Construction feasibility

◀ Actionable alternatives raised during scoping will be considered

◀ Further refinement during EIS

# Stakeholder Engagement Workshops

- ◁ Goal: Identify actionable alternatives to increasing IBT that should be evaluated within the scope of the EIS
- ◁ Looking for stakeholders to represent broad and diverse interests
- ◁ Stakeholders will have the ability to shape the alternatives that will be considered
- ◁ Logistics:
  - Fall 2024
  - Professional facilitation – CDMSmith selected
  - Multiple workshops – At least 3
  - Meeting format – in-person with virtual option

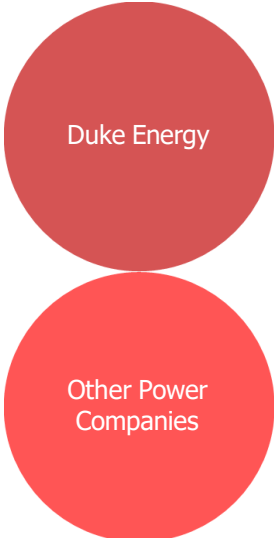


# Draft Stakeholder Interests

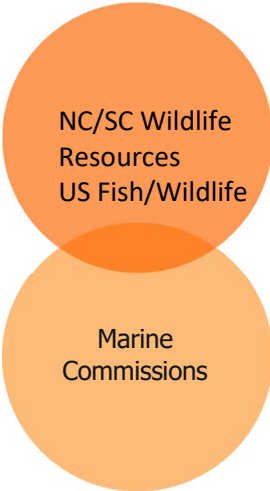
## Water Planning



## Electric Power



## Recreation



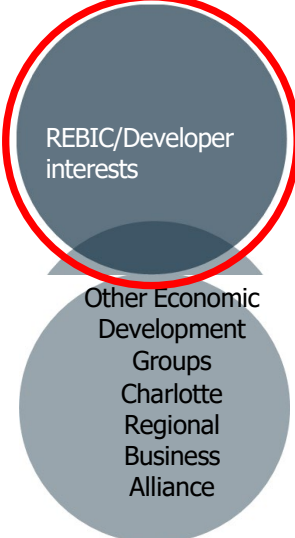
## Environment



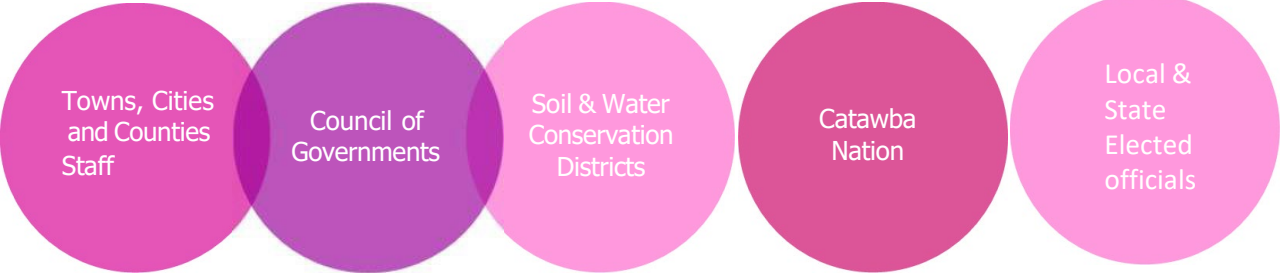
## Regulatory



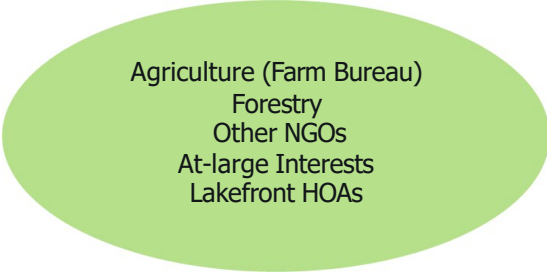
## Industry/Economic Development



## Local Government



## Other Groups



# Questions or Comments?





Translation of this document is available by calling 311 or 704-336-7600.

La traducción de este documento está disponible llamando al 311 o al 704-336-7600.

Bản dịch của tài liệu này có sẵn bằng cách gọi 311 hoặc 704-336-7600.

La traduction de ce document est disponible en appelant le 311 ou le 704-336-7600.

如需本文件的翻译，请致电 311 或 704-336-7600。

311 أو 704-336-7600 ترجمة هذه الوثيقة متاحة عن طريق الاتصال بالرقم